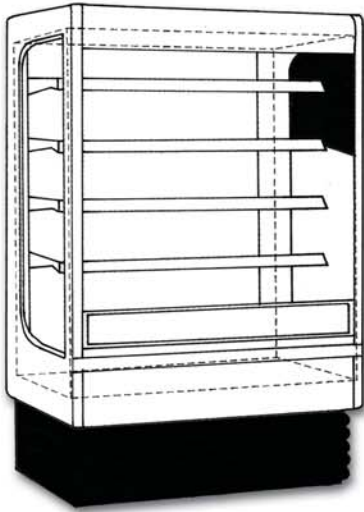


MEASURING INSTRUCTIONS



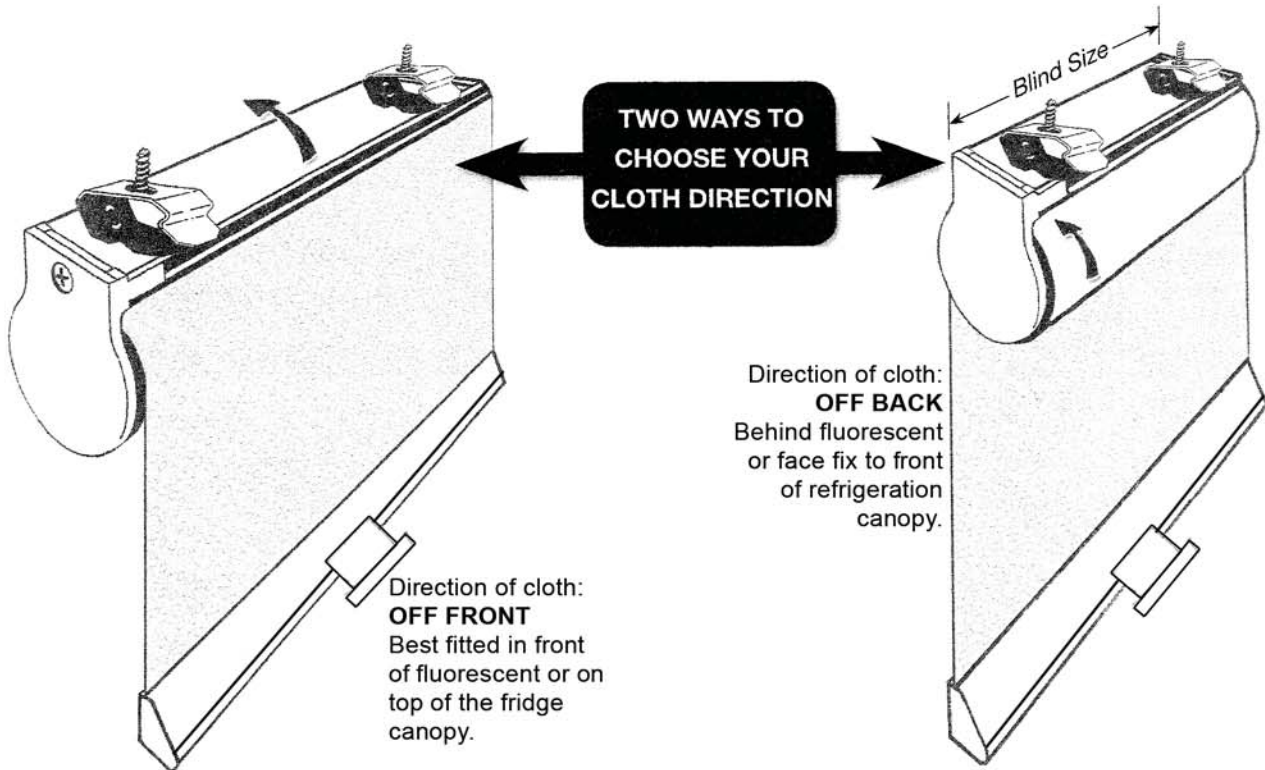
When measuring please give full lengths of Refrigeration Cabinets.
 For example: If the cabinet measures 3665mm wide, this will require two blinds to cover this area width at 1832mm. Maximum length of manual blinds is 1900mm wide.

To measure your cabinet... simply:

Step 1: Decide if you require your Chillscreens blind on top or inside your cabinet.

Step 2: When measuring for on top, measure from inside the cabinet walls.

Step 3: For Chillscreens blind, to be fitted on the inside of the cabinet, measure within the cabinet internal wall ends. Chillscreens blinds can be fitted behind the fluorescent lighting and, in some cases, in front of the fluorescent lighting. Always make sure the blinds are fitted in front of the cold air flow. This means the cold air flow stays behind the blind.



Chillscreens Blinds			
Company Name	Width	X Drop	Quantity
Address	Width	X Drop	Quantity
.....	Width	X Drop	Quantity
Postcode	Width	X Drop	Quantity
Phone	Width	X Drop	Quantity
Contact	Width	X Drop	Quantity